



tOm Programmer USB Driver Installation Manual

- Software version 4.01 -



© Copyright 2014 Tehnologistic SRL
All rights reserved

No part of this publication may be reproduced or transmitted in any form or by any means, electronic or mechanical, including photocopying, without the written permission of
SC Tehnologistic SRL
Subject to change without notification



Please read this manual carefully before carrying out the installation!!! Although our products are very robust, incorrect connections may destroy the module!

During the operation of the device the specified technical parameters shall always be met. At the installation the environment shall be fully taken into consideration. The device must not be exposed to moisture and to direct sunshine.

Content

1. Downloading the software packages 3
2. Installing the USB drivers 3
3. Installing the tOm Programmer software 17
4. Recommendations 19



1. Downloading the software packages

The required USB drivers are contained in a zip archive, and can be downloaded from the link below:

http://www.train-omatic.com/downloads/software/tOm_Programmer_Drivers.zip

The current version of tOm Programmer is 4.01, and can be downloaded from the following link:

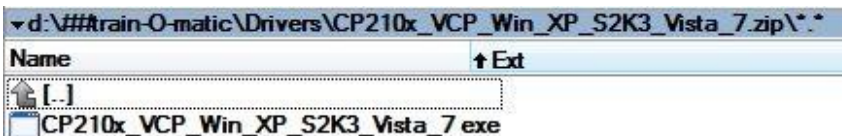
http://www.train-omatic.com/downloads/software/tOm_Programmer_v4.01.zip

These archives must be copied to a temporary folder from where the installation programs will run according to the instructions.

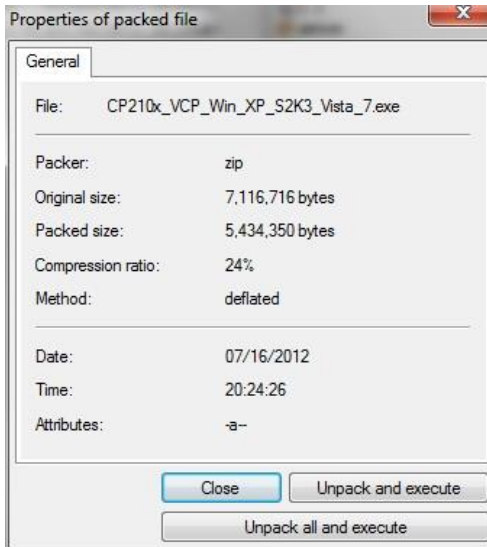
2. Installing the USB drivers

To install the USB drivers please go through the following steps :

- Before connecting the programmer please install the USB drivers and driver package on your computer. Run the executable from the archive above applying double click on the executable (CP210x_VCP_Win_XP_S2K3_Vista_7.exe).



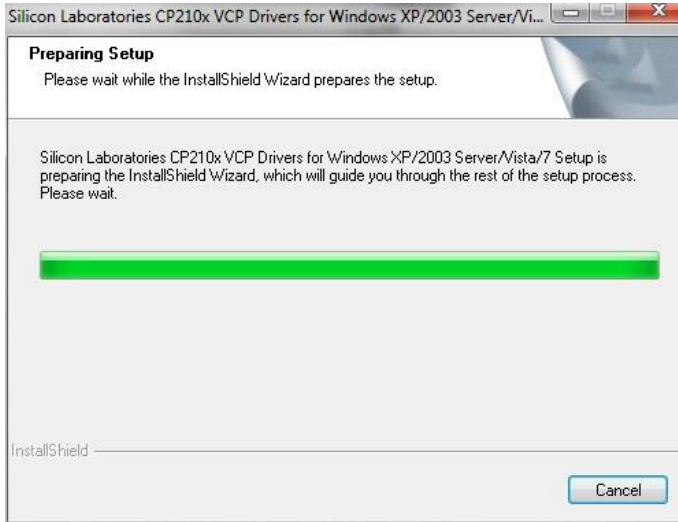
- Start the installation by clicking on “Unpack and execute”.



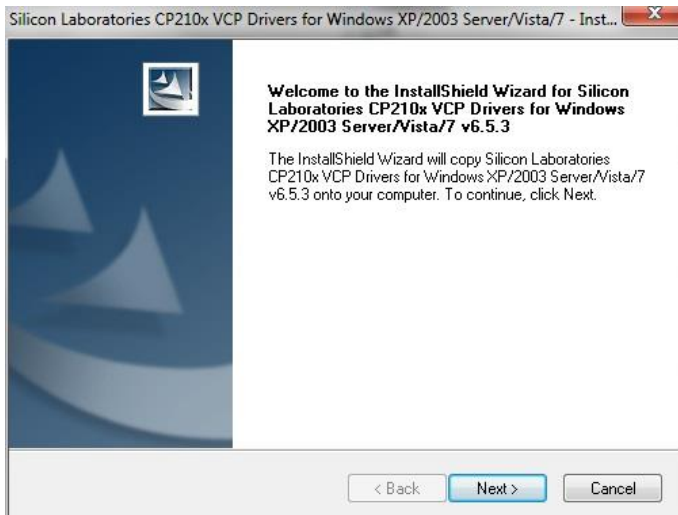
- The logo of Silicon Laboratories (the manufacturer of the driver) will be displayed.



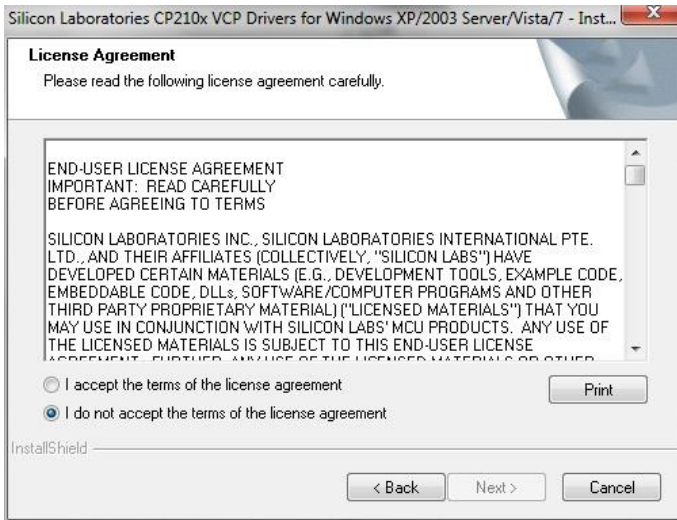
- The operating system will notify you that is preparing to install the driver package.



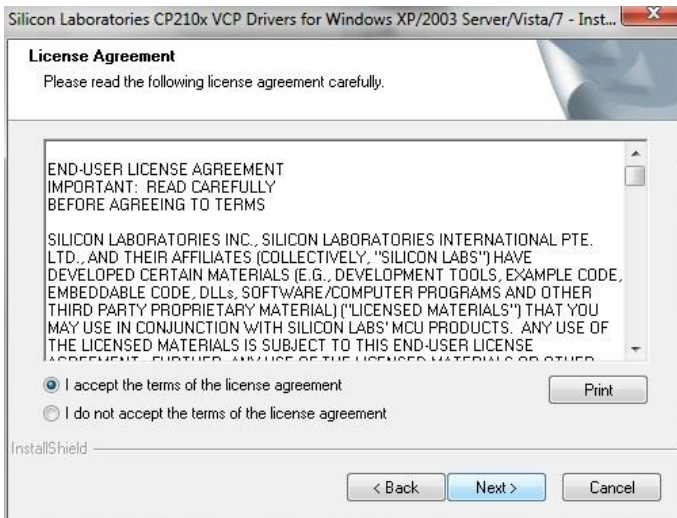
- The driver package will be installed on the computer, operation that has to be accepted by clicking on the Next button.



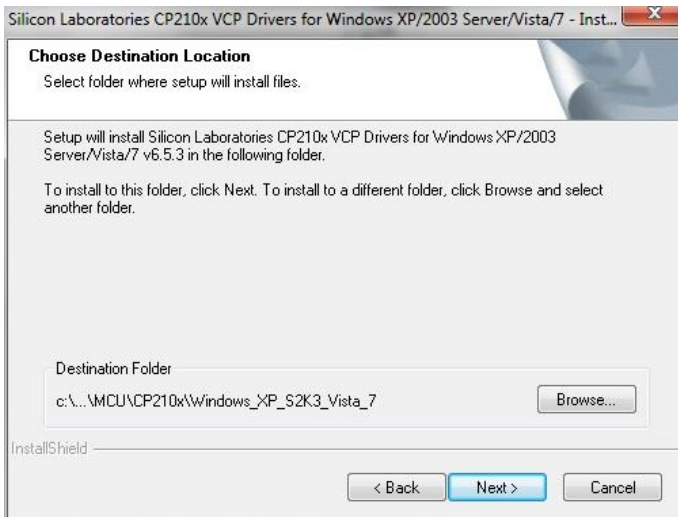
- The installation package asks to accept the licensing terms.



- Check Accept and continue with a click on the Next button.



- During the installation of the driver package we can change the default location. However, we recommend using the standard/default location. Continue the installation in the default location by clicking on the Next button.

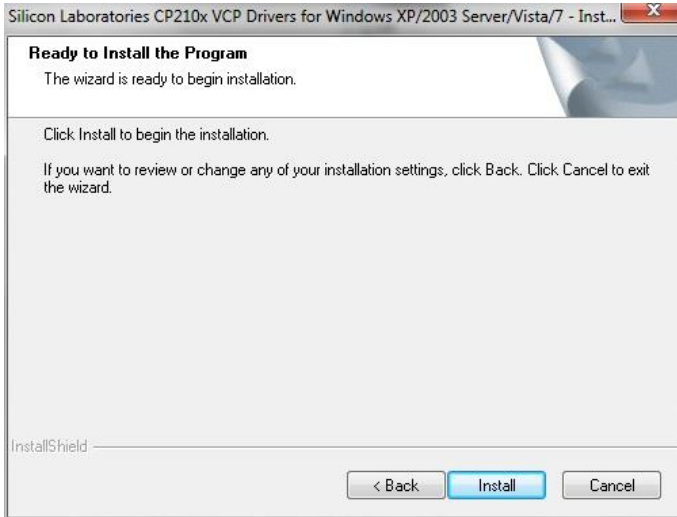


- During the installation on drive C a “Silabs” folder is created. If manual configuration of the driver is needed, it can be found in the location (default):

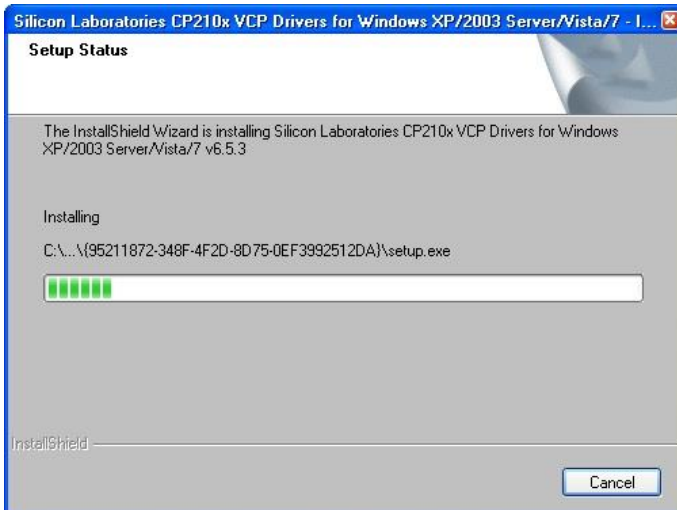
c:\SiLabs\MCU\CP210x\Windows_XP_S2K3_Vista_7\CP210x\Windows_XP_S2K3_Vista_7\

- The operating system informs us that the necessary settings for beginning the driver’s installation package were made.

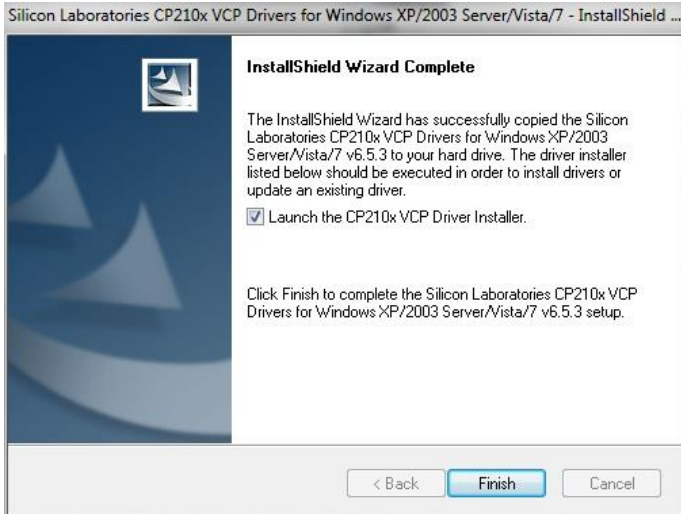
- Confirm starting of the installation by clicking the Install button.



- During the driver package installation an information window is displayed.



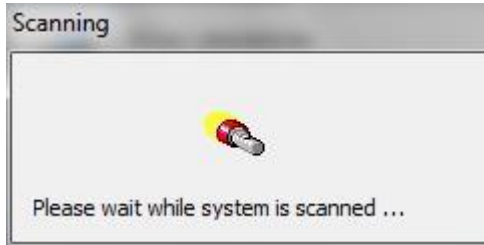
- Upon completion of the of drivers package installation, the operating system informs us about the success. Confirm the installation of the drivers by clicking the Finish button.



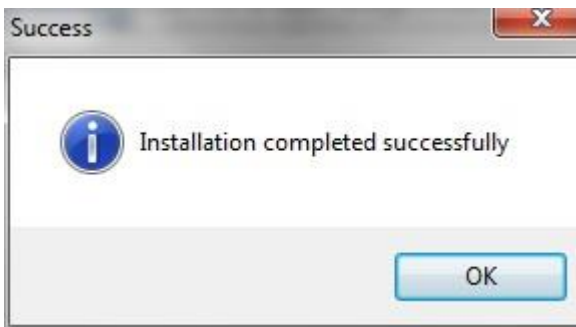
- The driver installation will follow, start it by clicking the Install button.



- The operating system will perform the installation:



- We will be notified of the completion of installation with a message window.

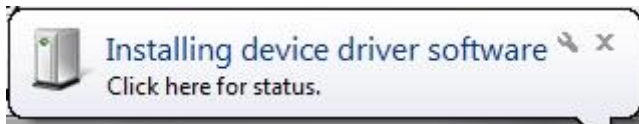


- During installation , even if there is a message that the driver is not MS certified, we can accept the installation by clicking OK.

- After the driver installation, the programmer can be connected to the USB interface of the PC (power supply connections not required at this time). The status LED of the programmer will light in RED at this moment.



- When connecting the programmer to the PC, we will be notified that the operating system has recognized the interface, and is installing drivers.



- Proper functioning of the drivers and the interface is also confirmed in a message window.



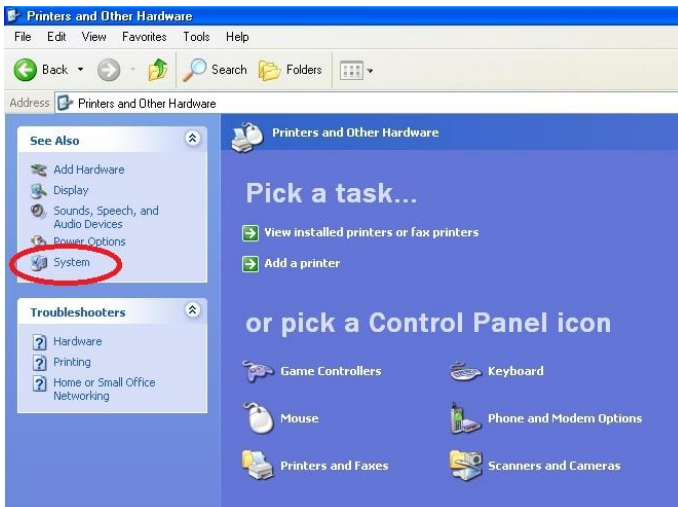
- After installing the driver and connecting the programmer, we check which serial port is configured by the operating system to the programmer.

For Windows XP operating system, do the following:

- Select Start then Control Panel



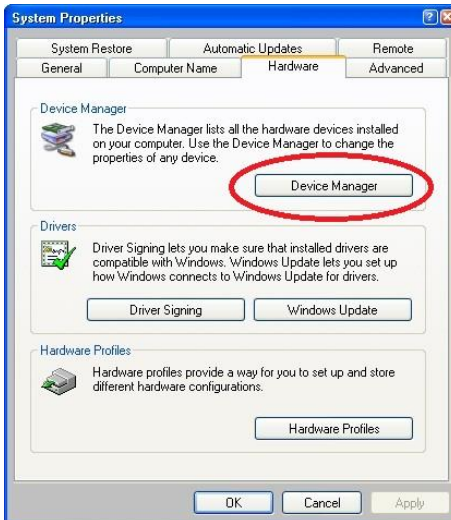
- Select System Menu



- In the System window select the Hardware TAB.



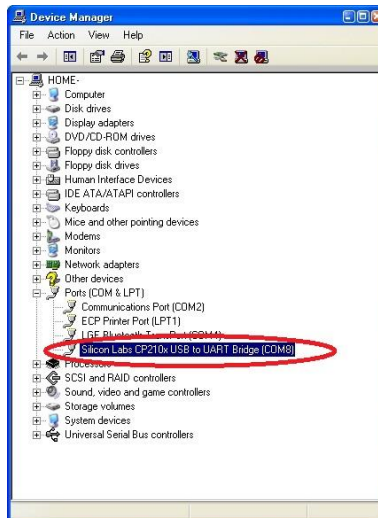
- Select the Device Manager button.



- Select COM and LPT ports.

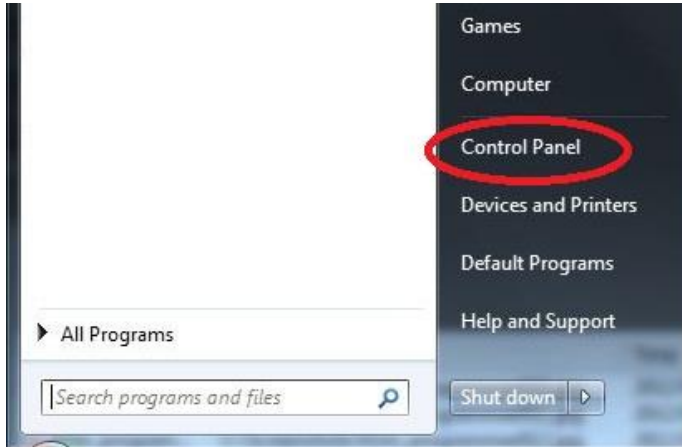


- Check on which serial port is configured the Silicon Labs CP210x . In the example below it is configured on port COM8 . The serial port must be specified when configuring the tOm Programmer.

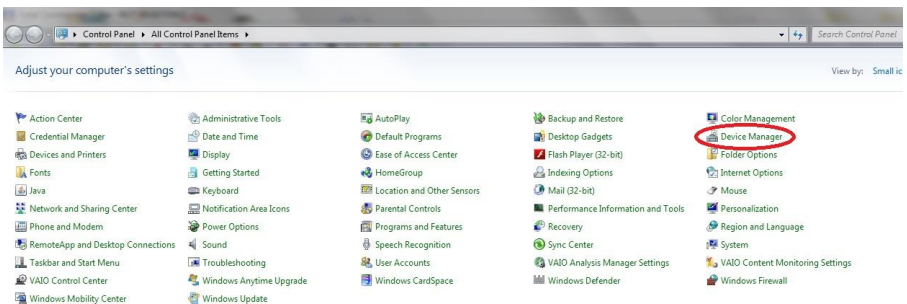


For Windows 7 operating system, do the following:

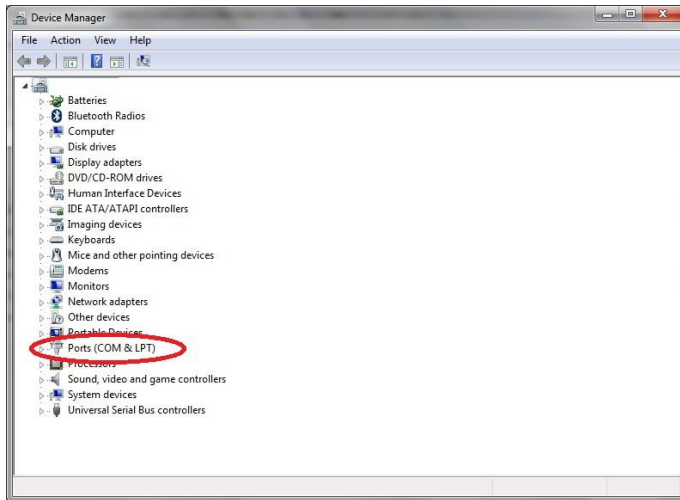
- Click on Start then Control Panel



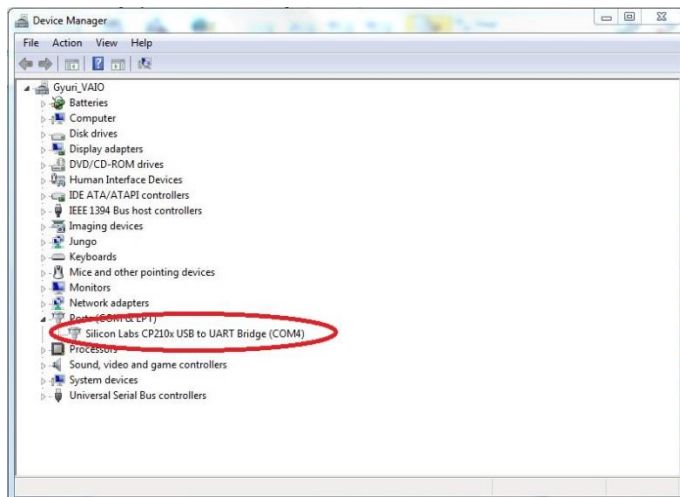
- Select Device Manager



- Select COM & LPT ports.

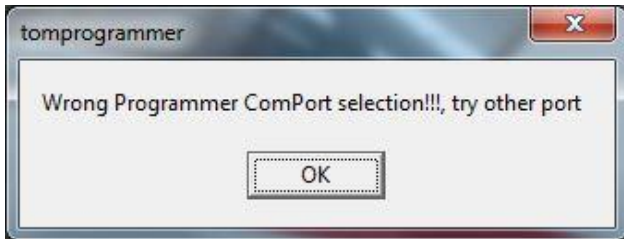


- Check on which serial port is configured the Silicon Labs CP210x. In the example below it is configured on port COM4. The serial port must be specified when configuring the tOm Programmer.

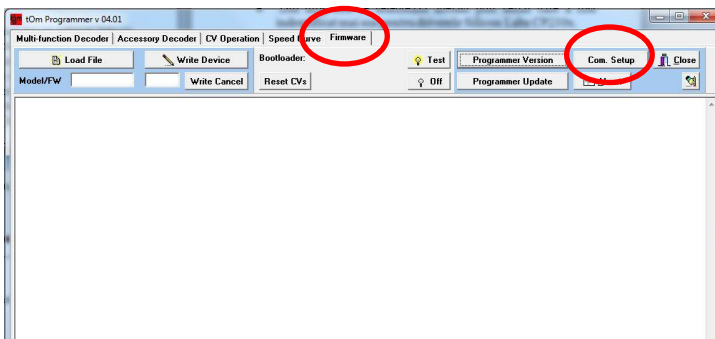


3. Installing the tOm Programmer software

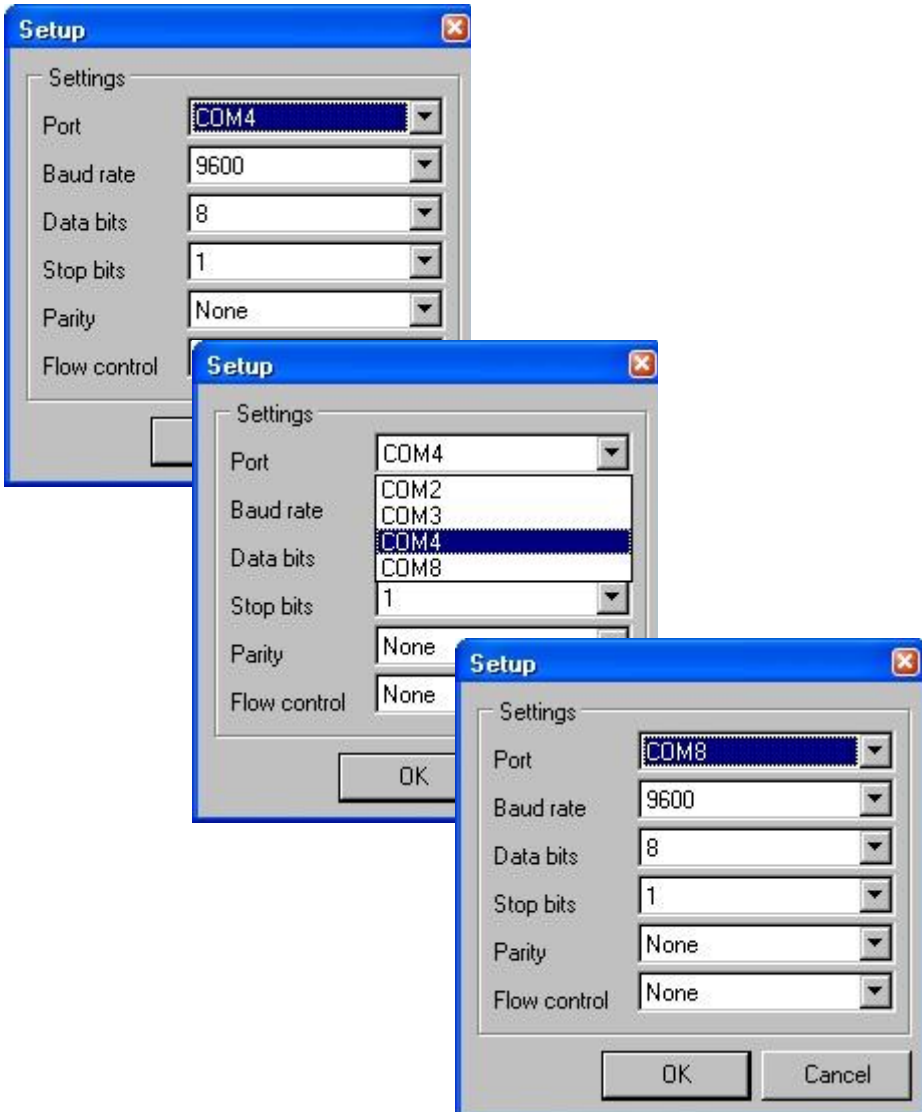
- The software downloaded from the link on page 3 should be unzipped in a folder where it will be used. The folder name can be freely defined by the user (example: tOm Programmer).
- Run the executable from the above folder by applying double click on the executable (tOmProgrammer.exe). At first run you may experience an error message stating that the configured serial port (default) it is not found.



- Accept with OK, than in the Firmware TAB of the tOm Programmer click on ComSetup.



- From the drop-box select the same serial port that was identified at the end of chapter 2 for the Silicon Labs CP210x drivers (in our example COM8 is used).





- Other settings does not require changes. After the setup is completed at the next run is not necessary anymore to perform these operations. Close the window by clicking the OK button.
- To test the operational status of the programmer (connected to your computer and powered with the power supply), return to the Multi- function Decoder TAB of the tOm Programmer and press the Power On button. The status LED of the programmer will change its color from RED (DCC OFF) to GREEN (DCC ON). If while you press Power Off the status LED changes its color back to RED, the system works properly.



Please note!

The programmer has to be connected to the USB port of the computer before running the program, and the programmer will be disconnect from the USB port of the computer only after the program was closed .

The programmer requires a stabilized 16-18 V dc power supply with a connector with inner positive terminal (+). When connecting the programmer to the USB port of the computer, the status LED will light in RED color.

4. **Recommandations**

We recommend the use of COM3-COM8 serial ports on the computer.



Copyright © 2014 Tehnologistic SRL
All rights reserved
The information in this document is subject to
change without notice



“train-o-matic” and the  **logo are registered**
trademarks of Tehnologistic SRL

www.train-o-matic.com
www.tehnologistic.ro

Tehnologistic SRL
Str. Libertatii Nr. 35A
407035 Apahida, Cluj
Romania
Tel +40-264-556454
Fax +40-264-441275

